

翠綠的家居環境，

時尚的房屋設計

Greenland Villa

綠雅園

24.6' X 44.3'
From RM 220,000



Single Storey 单层半独立
Semi-Detached

23' X 44.3'
From RM175,000



Single Storey 单层排屋
Terrace 中间/角头
intermediate/corner

For further enquiries, please visit our sales office:



皇煜建設股份有限公司
Top Green Construction Development Sdn. Bhd.

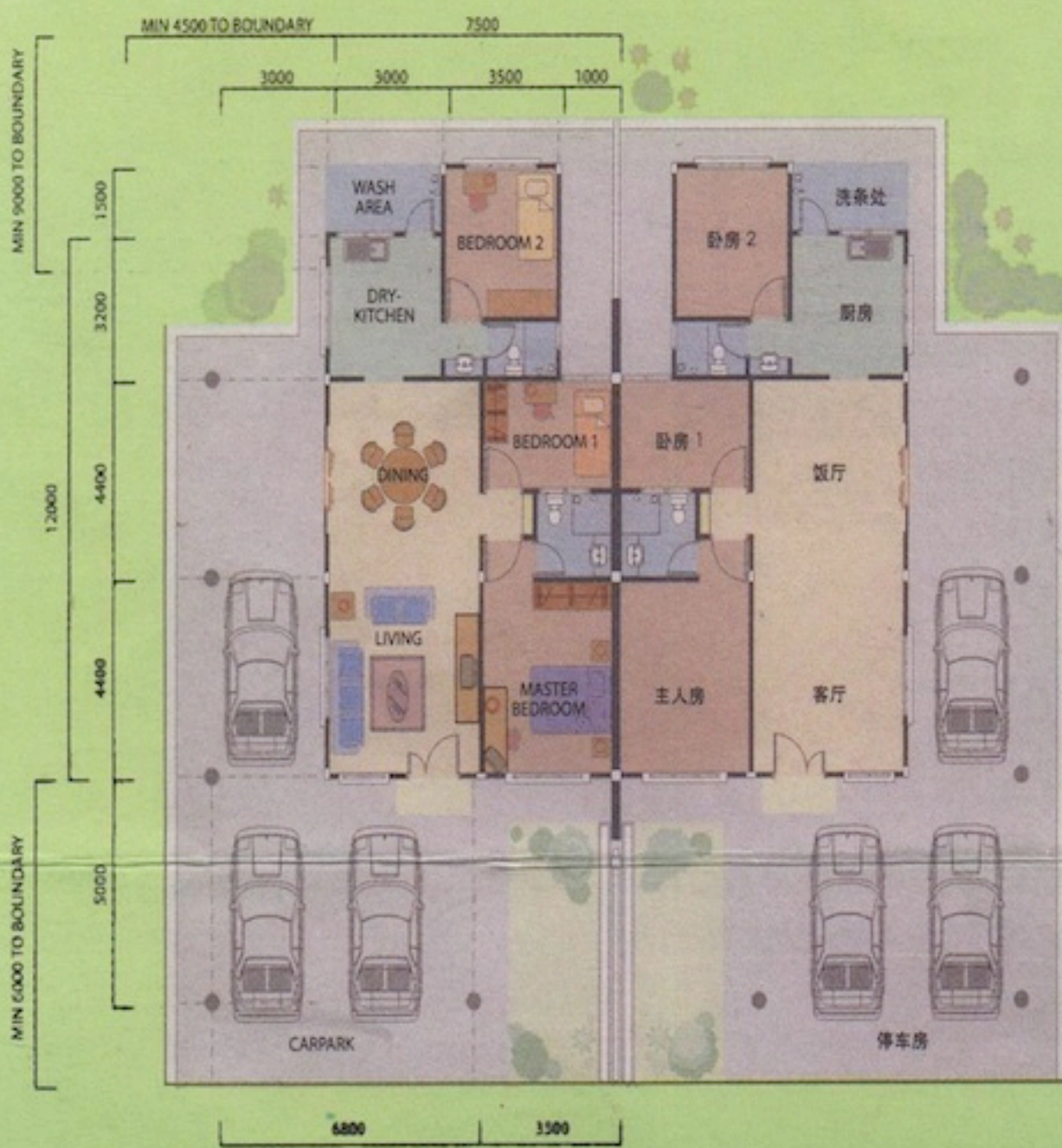
(494455-P)

1st Floor, Lot 2796-2797, Block 10, 3rd Mile, Jalan Tun Ahmad Zaidi Aduce,
93250 Kuching, Sarawak, Malaysia

TEL: 082-232888 • 016-8869298 • 013-8219393

FAX : 082 235288 OFFICE HOUR: Monday to Saturday : 8.00 am to 5.00 pm

Locality Plan



Single Storey **单层半独立**
Semi-Detached

Single Storey **单层排屋**
Terrace 中间/角头
intermediate/corner

Semi Detached		Terrace Inter		Terrace Corner	
Total Wall Up Area	92.1m ² 991.4ft ²	Total Wall Up Area	85.3m ² 918.2ft ²	Total Wall Up Area	85.3m ² 918.2ft ²
Total Covered Area	157m ² 1690ft ²	Total Covered Area	129.5m ² 1394ft ²	Total Covered Area	154.9m ² 1667ft ²