

皇煜 TOP GREEN 青青校墅第5期

Literature Villa Phase V



Double Storey Terrace Houses
雙層排屋

Artist's impressions only.

皇煜 TOP GREEN 青青校墅第5期

Literature Villa Phase V



Site Locality

For further enquiries, please visit our sales office:

皇煜建設股份有限公司
Top Green Construction Development Sdn Bhd

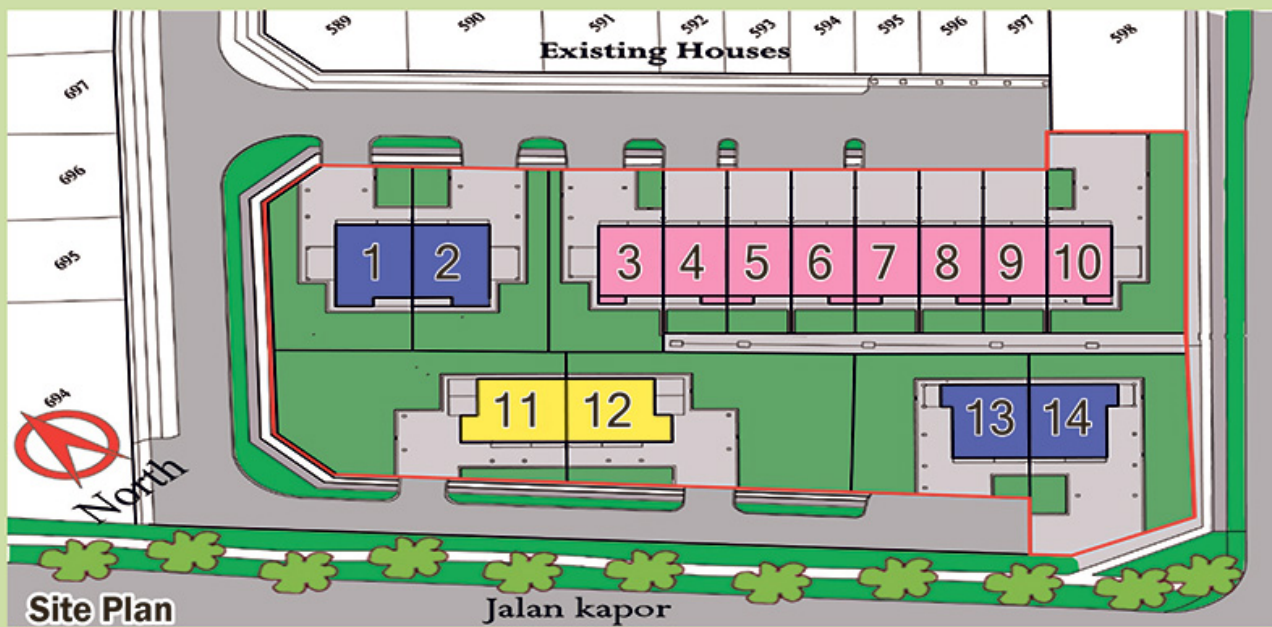
1st Floor, Lot 2796-2797, Block 10, 3rd Mile, Jalan Tun Ahmad Zaidi Adruce, 93200 Kuching, Sarawak, Malaysia.

Tel : 082 232 888 FAX : 082 235 288

H/P : 016 886 9298 / 016 886 7829

**Office Hour : Monday to Saturday
: 8.00am to 5.00pm**

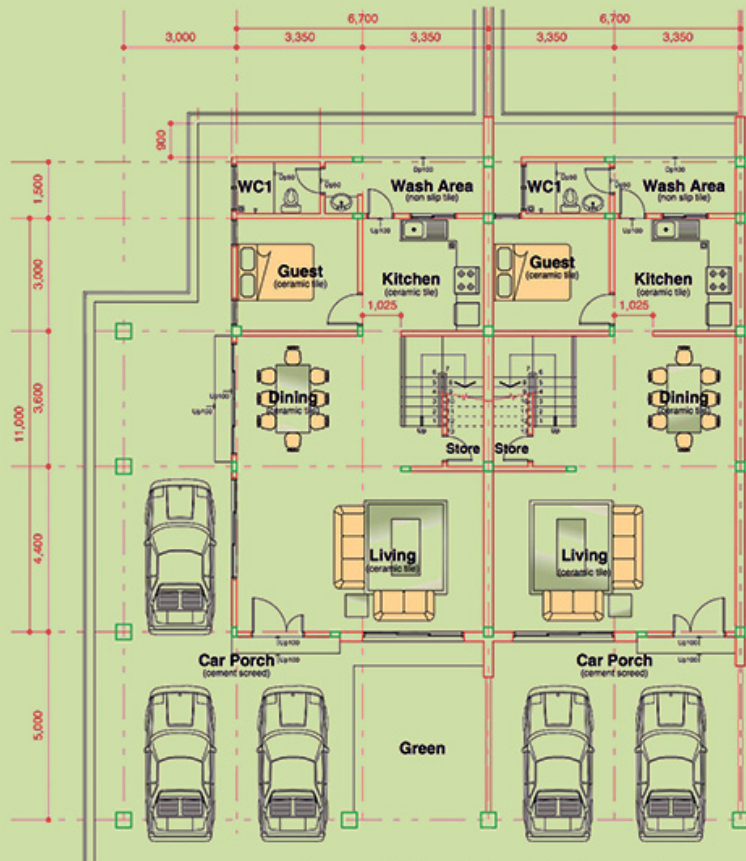
* All illustrations and colour schemes are artist's impressions only. The information contained herein is subject to change without notifications as may be required by the relevant authorities or developer's architect and cannot form part of an offer or contract. All measurements are approximate. Whilst every effort has been made to ensure accuracy, The owner, developer and managers cannot be held responsible for any variations or inaccuracies.



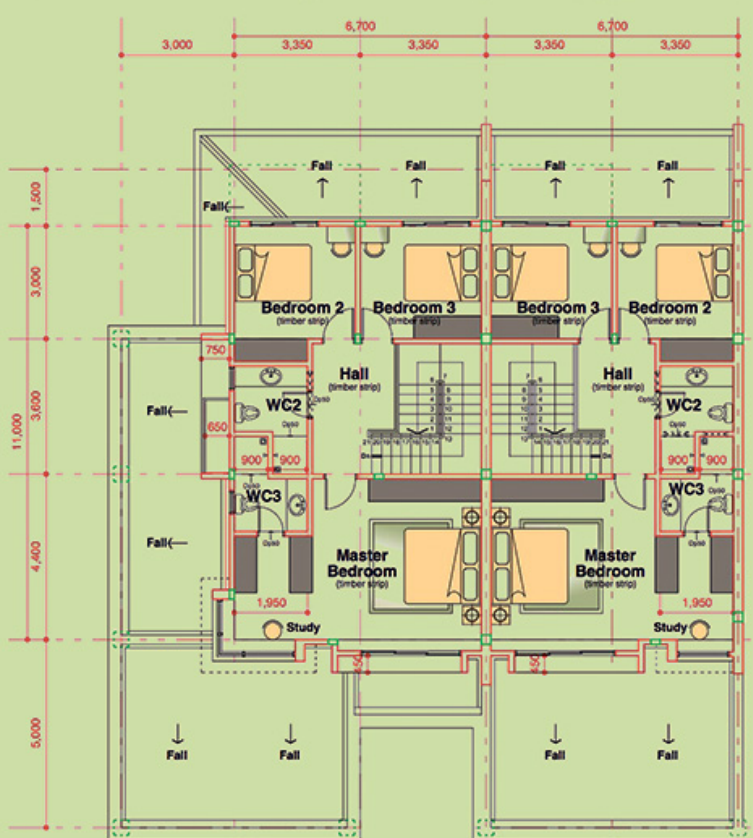
BUILDING SPECIFICATIONS 建築材料說明

- (a) Structure : Reinforced concrete framework with red clay brick wall.
結構 : 柱、梁、地面等皆采用永久鋼筋水泥R.C. 混凝土構造, 并采用紅磚牆
- (b) Roofing : Interlocking tiles and metal roofing.
屋頂 : 采用混凝土屋瓦和金屬屋瓦
- (c) Ceiling : Fiber plaster ceiling to living, dining, kitchen, all bedrooms, carporch, Bathrooms and Wash Area. (Except Roof Eave - UAC superflex ceiling)
天花板 : 客廳、飯廳、廚房、所有的臥室、車房、浴室及洗條處皆采用纖維石膏板(除了屋檐-UAC天花板)
- (d) Windows : Aluminium frame windows with tinted glass
窗門 : 鋁制框架并附有玻璃
- (e) Doors : Timber doors to all external and internal
門 : 內外門片皆采用堅硬木門
- (f) Floors : Floor tiles (2' X 2') to living, dining, study room and kitchen. Ceramic Tiles for all the bathrooms, wash area and entrance porch. Laminated Floor to 1st Floor and staircase. Car porch cement screed.
地板材料 : 客廳、飯廳、書房及廚房采用2' x 2'地磚。至于浴室、洗條處及進門臺的地板則采用高級彩色瓷磚。一樓地板及樓梯則采用疊層地板。車房為洋灰地板。
- (g) Wall finishes : Full height ceramic wall tiles all round kitchen and minimum

- 1.5meter height for Bathrooms. Interior finished with emulsion paint and exterior finished with weather bond paint.
牆壁材料 : 廚房貼高級壁磚至天花板和浴室貼高級壁磚至少1.5公尺高。內牆皆粉刷乳膠漆, 外牆則粉刷晴雨漆。
- (i) Kitchen : Stainless steel kitchen sink and tap.
廚房設備 : 不銹鋼洗手盆和水龍頭。
- (j) Sanitary : Concealed piping with quality sanitary fittings. (Only Master Bedroom with TOTO sitting closet)
Installation : Stand pipes to car porch and wash area.
衛浴設備 : 隱藏式水管并采用高級衛浴設備。(祇有主人房備有TOTO品牌的馬桶)車房及洗條處皆備有立式水龍頭。
- (k) Electrical : Concealed conduit single phase wirings, socket points and switches, T.V. and telephone points, hot water heater points and air-con points, gate light point, automatic gate point and door bell point.
電流設備 : 供電系統采用單向電流隱藏綫管。每戶裝置電插座和電燈電位, 電視天綫和電話綫出綫口, 浴室熱水器插座, 冷氣插座, 門柱燈插座, 自動電門插座和門鈴插座。
- (l) Fencing : Metal gate and brickwall/metal fencing to front, sides facing road and between carporch.
籬笆 : 采用鐵制籬笆門。于屋前, 道路邊及車房之間采用磚牆配搭鐵欄杆籬笆。



Ground Floor Plan (Sublot 3-10)



First Floor Plan (Sublot 3-10)