

TAMAN MOYAN INDAH

Phase 2

2 units
Double storey
SEMI-DETACHED

LAND SIZE
12.43 POINTS ONWARDS



35 units

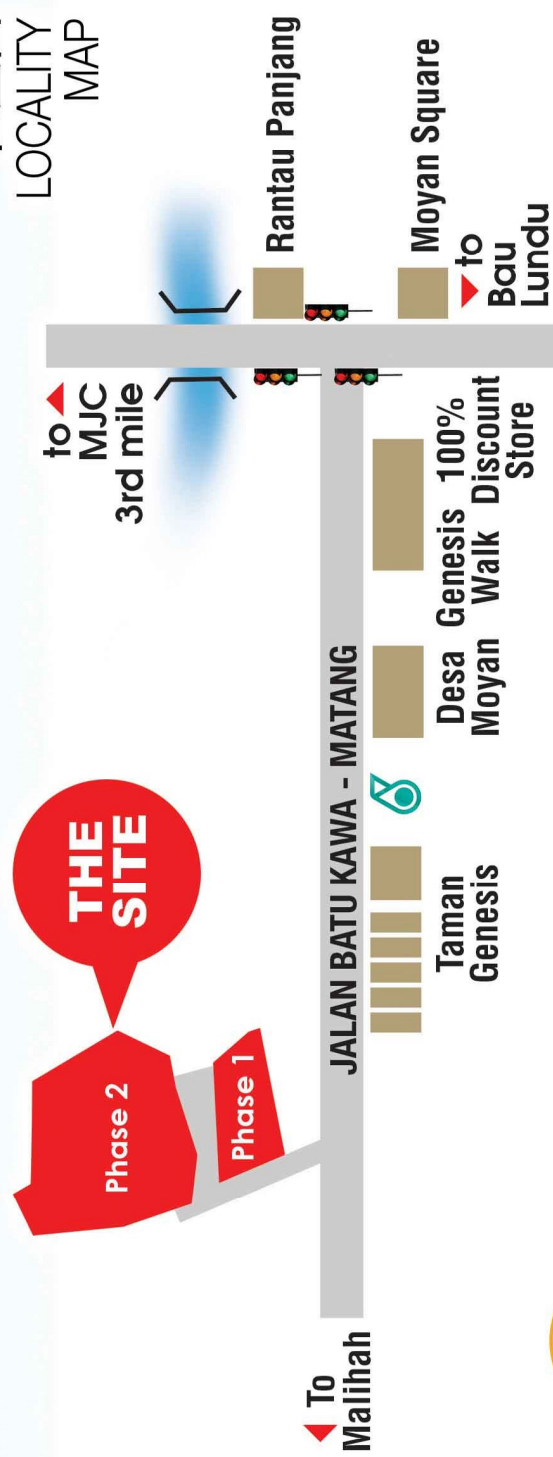
Double storey
TERRACE HOUSES

CORNER
LAND SIZE **7.67 POINTS ONWARDS**

INTERMEDIATE
LAND SIZE **4.47 POINTS ONWARDS**



位置图
LOCALITY
MAP



GKS DEVELOPMENT SDN BHD (221228-T)

082 481 888 | 016 886 7829 | 016 886 9298

All illustration and colour schemes are artist's impression only. The information contained herein is subject to change without notification as may be required by the relevant authorities or developer's architect and cannot be part of contract. All measurements are approximate. Whilst every effort has been made to ensure accuracy, the owner, developer and managers cannot be held responsible for any variations.

Housing Developer's Licence: L0007/KP/HD/01/2019/0004 - Adv. and Sale Permit No: P0008/KP/HD/01/2019/0003 - SPA Approval: P/1D/87-16 Approval Authority: MPP

Approval Building Plan: 169/17-175/17 Expected Completion Date: Dec 2020 Year of tenure: 60 years

SITE PLAN



LEGEND

35 Units
Double Storey
Terrace Houses

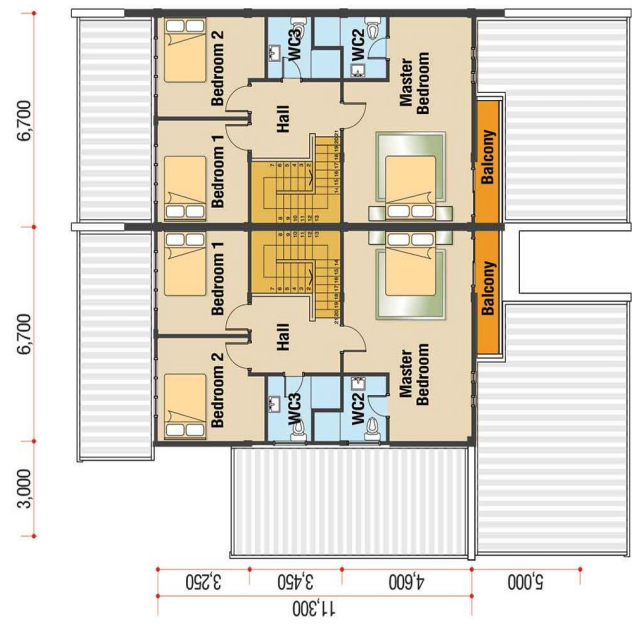
2 Units
Double Storey
Semi-Detached
Houses

FLOOR PLAN

DOUBLE STOREY TERRACE - GROUND FLOOR PLAN



DOUBLE STOREY TERRACE - FIRST FLOOR PLAN

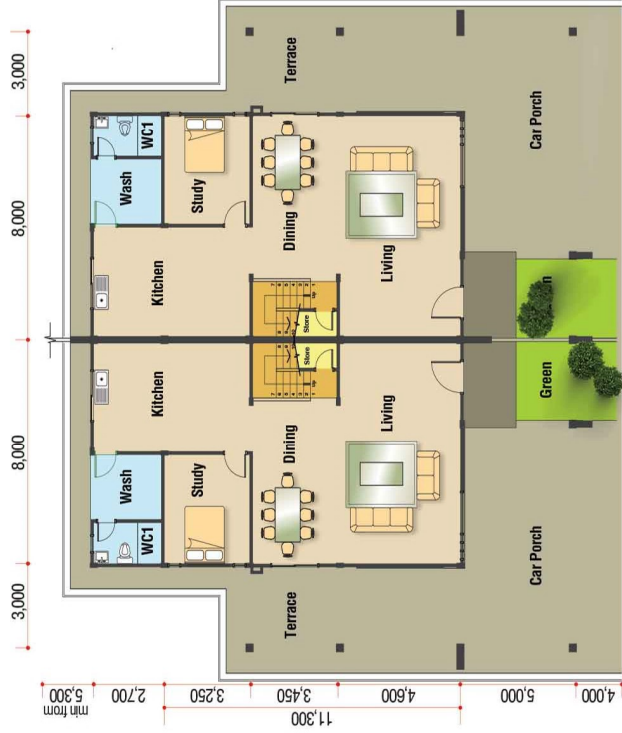


CORNER -
INTERMEDIATE -

BUILT IN AREA : 22' X 44.3' @ 1,788.63 FT²
BUILT IN AREA : 22' X 44.3' @ 1,788.63 FT²

COVERED AREA : 2,516.09 FT²
COVERED AREA : 2,197.36 FT²

LAND AREA : 7.67 - 17.96 POINTS
LAND AREA : 4.47 POINTS



3,000 8,000 3,000

3,000 8,000 3,000

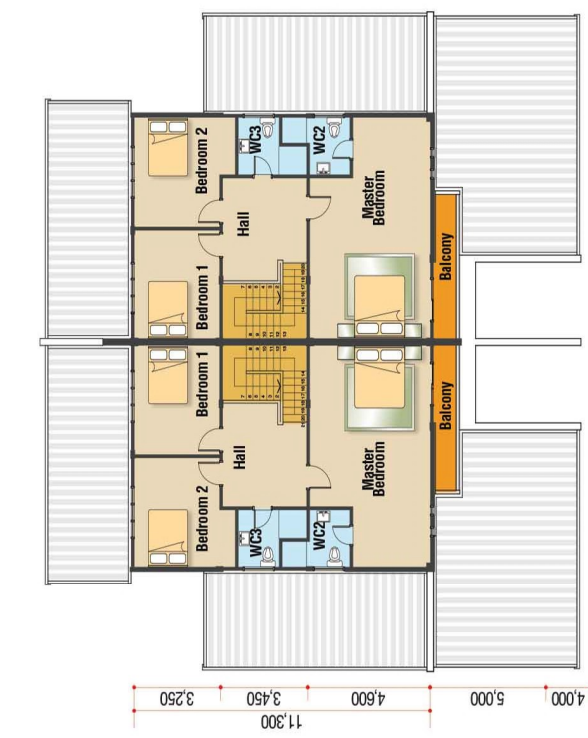
3,000 8,000 3,000

DOUBLE STOREY SEMI DETACHED - GROUND FLOOR PLAN

BUILT IN AREA : 26.2' X 46' @ 2,178.73 FT² COVERED AREA : 2,933.11 FT² LAND AREA : 12.43 - 12.60 POINTS

DOUBLE STOREY SEMI DETACHED - FIRST FLOOR PLAN

BUILT IN AREA : 26.2' X 46' @ 2,178.73 FT² COVERED AREA : 2,933.11 FT² LAND AREA : 12.43 - 12.60 POINTS



11,300 8,000 4,000

11,300 8,000 4,000

11,300 8,000 4,000