



TROPICAL
HEIGHT



Set amid a lush tropical landscape, Tropical Height can definitely be your modern-day sanctuary with its modern, natural, and Scandinavian design where you want to be after a day's work. Its design also incorporates contemporary living for busy and active lifestyles, focusing on exclusivity, comfort, security, and privacy. Located in Jalan Stephen Yong, it combines convenience and tranquility at the same time.

Come visit our showroom today!

把热带风情特色融入设计里，带着深远而宁静的特质，充满了温馨和安宁。以简白色与淡木色调为主，在整体视觉上拥有清新自然的质感。局部点缀那翠绿欲滴的绿色，给您的家带来最放松的一片角落。您是否也想拥有这具备时尚又温馨的家？

不妨跟着我们来看看。

LOCALITY PLAN



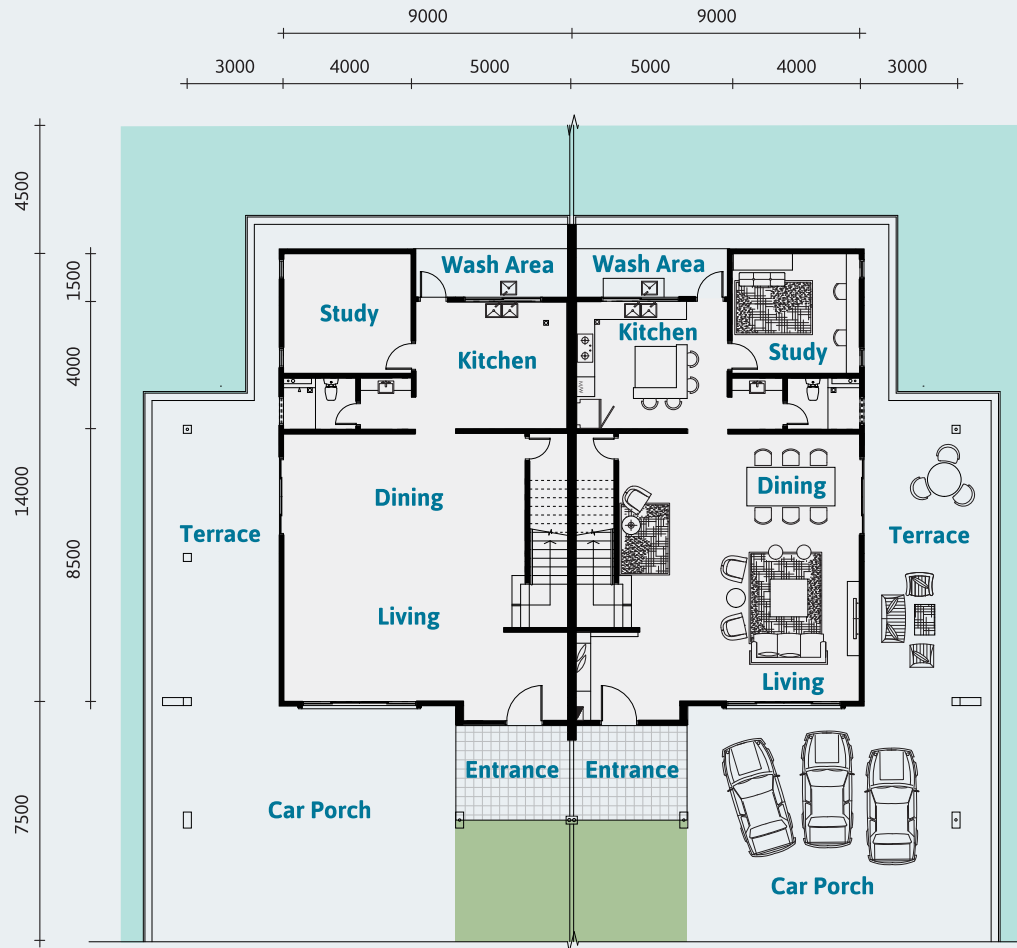
SITE PLAN



- Detached Lot**
- 1 unit
- Double Storey Semi-Detached**
- 12 units
- Double Storey Terrace**
- 35 units

DOUBLE STOREY SEMI-DETACHED





GROUND FLOOR PLAN



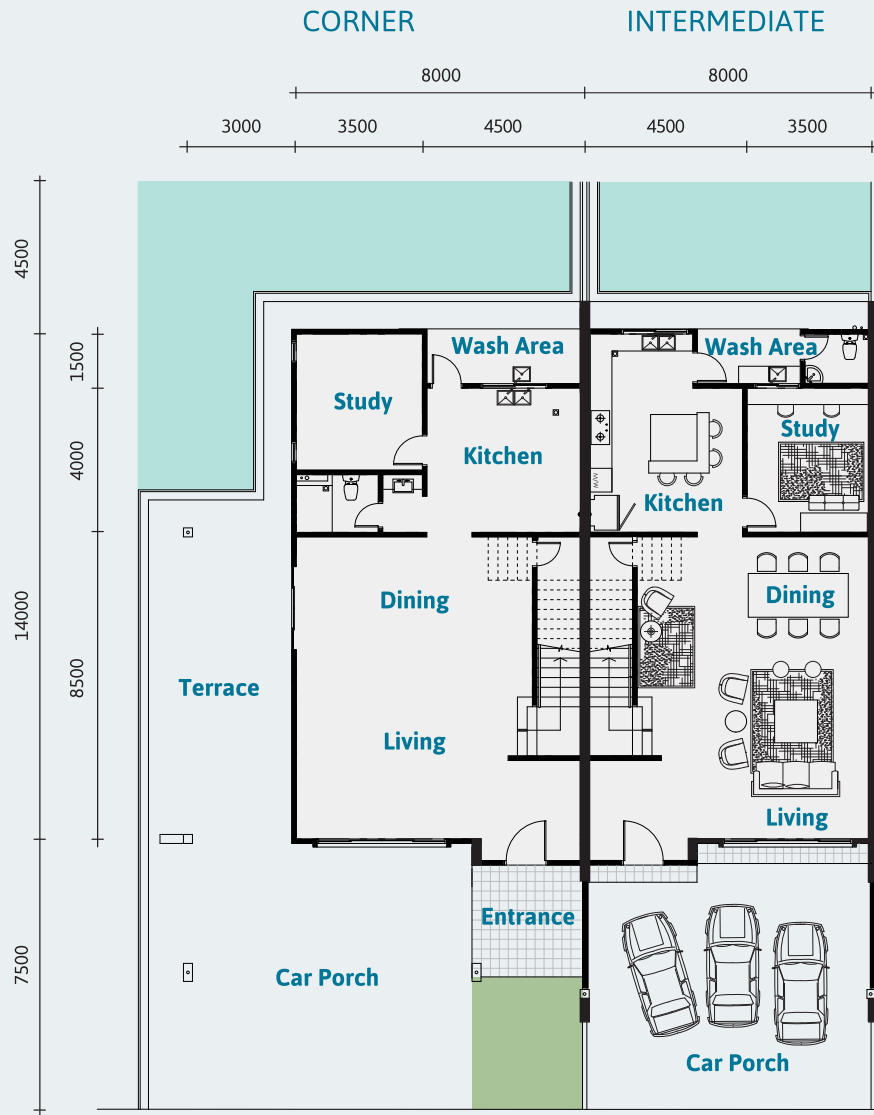
FIRST FLOOR PLAN

Built in area: 29.5' x 46' @2,609.96 ft² (242.46 m²) | Covered area: 3,263.9 ft² (303.21 m²) | Land area: 8.67 - 12.48 points

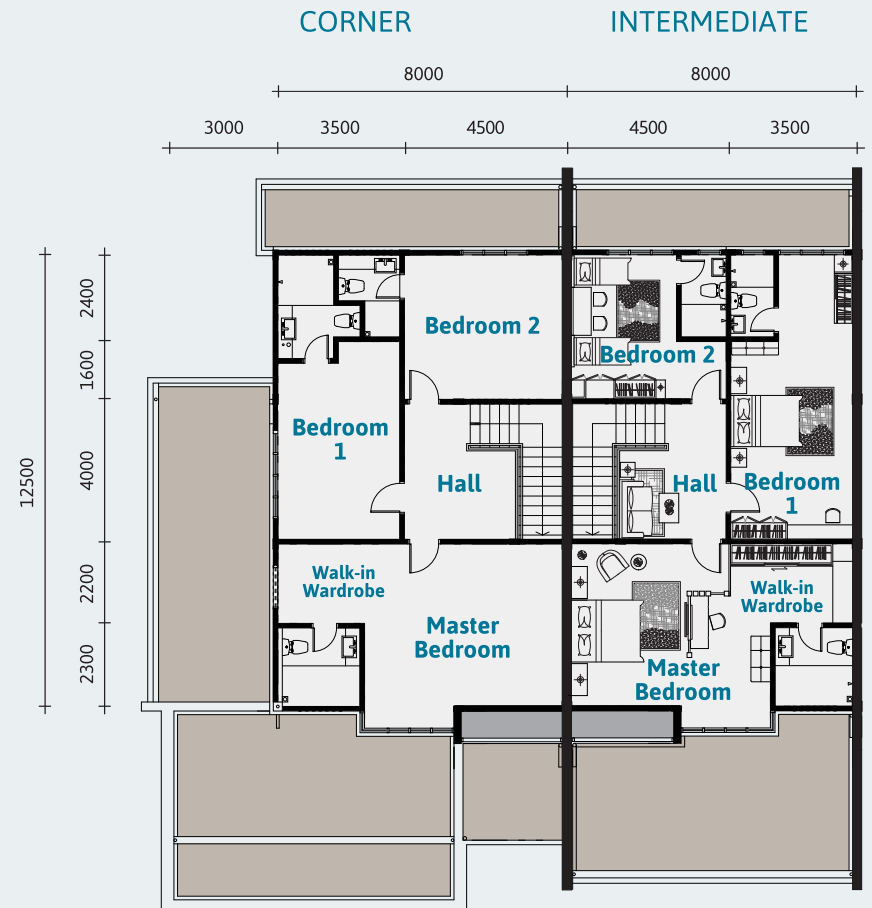
DOUBLE STOREY TERRACE

Conceptual design of bedroom 1





GROUND FLOOR PLAN



FIRST FLOOR PLAN

CORNER - Built in area: 26.2' x 46' @ 2,318.24 ft² (215.36 m²) | Covered area: 3,195.55 ft² (296.86 m²) | Land area: 8.03 - 11.56 points
INTERMEDIATE - Built in area: 26.2' x 46' @ 2,318.24 ft² (215.36 m²) | Covered area: 2,820.94 ft² (262.06 m²) | Land area: 5.14 points

082 481 888
016 886 7829
016 886 9298

topgreen.com.my



GKS DEVELOPMENT SDN BHD (221288-T)

Lot 1453, Section 66, KTLD, Jalan Kemajuan, Bintawa Industrial Estate, 93450 Kuching, Sarawak.

Housing Developer's License : L0059/KP/HD/01/2020/0013 • Advertisement & Sale Permit: P0065/KP/HD/01/2020/0019 • SPA Approval: P/1D/108-17 • Approval Authority: MPP • Approval Building Plan: 110/19, 111/19, 112/19, 113/19, 114/19
Expected Completion Date: December 2023 • Year of Tenure: 99 Years • Location Housing Development: Lot 80, Block 224, Kuching North Land District, Jalan Stephen Yong, Kuching

All illustration and colour schemes are artist's impression only. The information contained herein is subject to change without notification as may be required by the relevant authorities or developer's architect and cannot form any part of contract.
All measurements are approximate. Whilst every effort has been made to ensure accuracy, the owner, developer and managers cannot be held responsible for any variations.